



## SCOTT HOUSE

### OVERVIEW

---

A calming workspace with direct access from Waterloo Station.

---

A relaxing environment inspired by traditional Japanese minimalism, with a large lounge, plentiful natural light and muted colours.

---

Plenty of communal space in the building as well as meeting rooms for up to 20 people, focus booths and phone booths.

---

### AMENITIES

---

Lounge Areas

---

Showers

---

Phone Booths

---

Breakout Space

---

Focus Booths

---

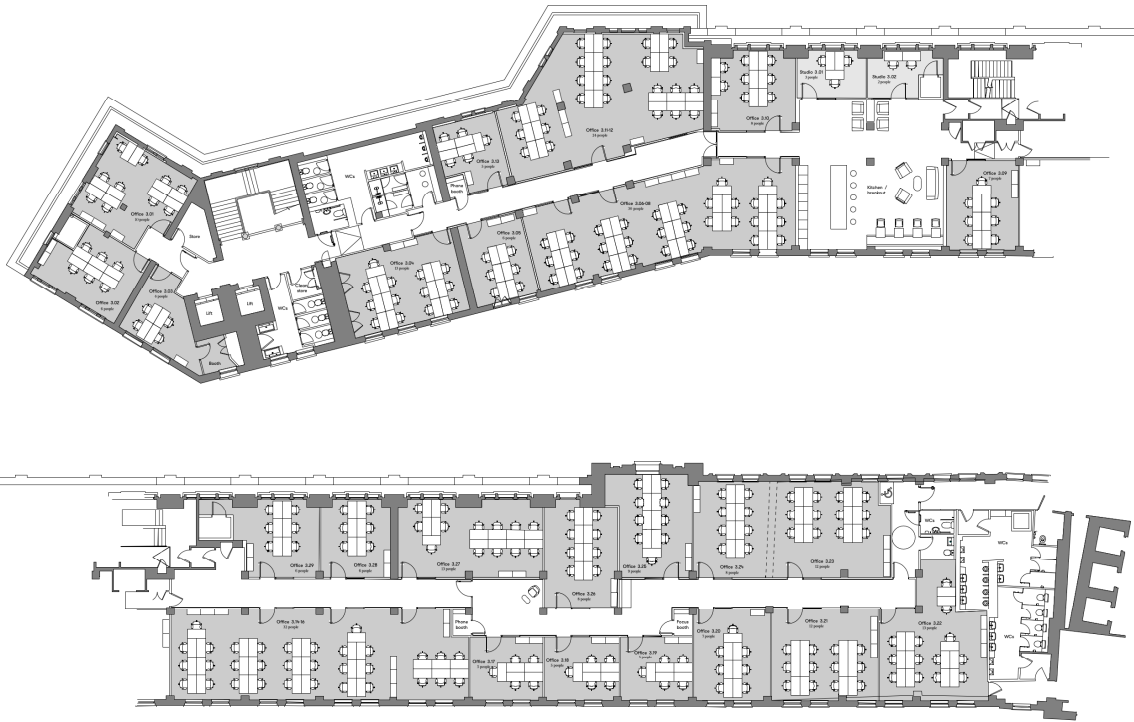
Fully Furnished

---

Kitchens

---





**Scott House**

**Third Floor Sales Plan**

SCALE	1:200 @ A3	REVISION	C
DWG No.	SP_03	DRAWN BY	CAE
DATE	OCTOBER 2018		
STATUS	FOR INFORMATION		

**GENERAL NOTES**

Scale and dimensions to any elements are indicative only. All dimensions to be checked on site prior to commencement of any works. DO NOT SCALE FROM THIS DRAWING.

**REVISION**

C: Demolished walls  
 B: 5/25/24 Update  
 A: Architect revisions - 18/09/18

**DATE**

08/07/2019  
 15/01/2019  
 26/09/2018

**FLOOR DATA**

Office NIA (sqft) 10,465  
 Number of desks 259

**TERMS**

Flexible by arrangement

**SUMMARY**

Available Size 50 sq ft to 5,010 sq ft

Price £700 per month per desk

Business Rates Included in desk rate

VAT Elected

**VIEWING & FURTHER INFORMATION**

Viewing strictly by prior appointment with the sole agent:

**CATHERINE ALEXANDER**

catherine@bureauoffice.co.uk

+44 (0)7811 111600



**LOCATION**

Positioned within Waterloo Station, Scott House could not be in a better location for those rainy London days. With Lower Marsh Market just around the corner - and the quirky shops, cafes and pubs that sit on the same road - you can take full advantage of the buzz of central London with plenty of places to visit for lunch or team celebrations. For a dose of culture at the end of the day, the Old Vic, National Theatre and IMAX are all on your doorstep.

Misrepresentation Act: Bureau Office Limited for themselves and for the vendors or lessors of this property whose agents they are give notice that: (i) the particulars are set out as a general outline only for the guidance of intending purchasers or lessees and do not constitute part of, an offer or a contract, (ii) all descriptions, dimensions, references to condition and necessary permissions for use and occupation, and other details are given in good faith and are believed to be correct but any intending purchasers or tenants should not rely on them as statements of fact but satisfy themselves by inspection or otherwise as to the correctness, (iii) no person in the employment of Bureau Office Limited has the authority to make or give any representation or warranty whatsoever in relation to this property, (iv) all rents and prices are quoted exclusive of VAT.