



## 2 STEPHEN STREET

### OVERVIEW

A peaceful retreat from central London, two Stephen Street features a calm atmosphere just minutes from Centre Point and Crossrail.

Flexible office space in a thoughtfully designed building which would suit every company from start-ups to corporates.

Light and spacious work space - including a large, and vibrant lounge adorned with stunning plants and muted colours.

The building features a host of private and communal work spaces to support productivity and collaboration.

### AMENITIES

Roof Terrace

Lounge

Bike Storage

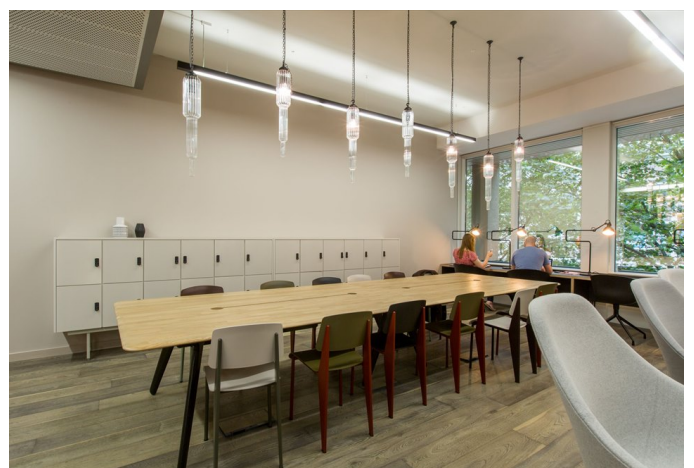
Showers

Lockers

Phone Booths

Kitchens

Breakout Space





**GENERAL NOTES**

Sizes and dimensions to any elements are indicative only. All dimensions to be checked on site prior to commencement of any works.

DO NOT SCALE FROM THIS DRAWING.

DEVISION DATE

**First Floor Sales Plan**

SCALE	1:200 @ A3	REVISION	-
DWG NO.	SPS_SP01	DATE	November 2019
DATE	November 2019	DRAWN BY	CAE
TITLE	For Information		

**2 Stephen Street**



**TERMS**

Flexible by arrangement

**SUMMARY**

Available Size 50 sq ft to 5,100 sq ft

Price £750 per month per desk

Business Rates Included in desk rate

VAT Elected

**VIEWING & FURTHER INFORMATION**

Viewing strictly by prior appointment with the sole agent:

**CATHERINE ALEXANDER**

catherine@bureauoffice.co.uk

+44 (0)7811 111600



**LOCATION**

Minutes from London's Centre Point, right on top of the Crossrail terminal and in an ideal position on Tottenham Court Road, few offices come better connected than two Stephen Street. A few moments from the shops of Oxford Street and bars and restaurants of Firovia, 2 Stephen Street has something for everyone.

Misrepresentation Act: Bureau Office Limited for themselves and for the vendors or lessors of this property whose agents they are give notice that: (i) the particulars are set out as a general outline only for the guidance of intending purchasers or lessees and do not constitute part of, an offer or a contract, (ii) all descriptions, dimensions, references to condition and necessary permissions for use and occupation, and other details are given in good faith and are believed to be correct but any intending purchasers or tenants should not rely on them as statements of fact but satisfy themselves by inspection or otherwise as to the correctness, (iii) no person in the employment of Bureau Office Limited has the authority to make or give any representation or warranty whatsoever in relation to this property, (iv) all rents and prices are quoted exclusive of VAT.