



ORION HOUSE

OVERVIEW

Located moments from Leicester Square, Orion House takes inspiration from classic West End theatres, and features a striking terrace overlooking St Giles.

Just off the lounge on the second floor sits a large terrace, where you can take your lunch or meeting alfresco whilst overlooking the rooftops and streets below.

A variety of different sized offices in the building, to suit all companies at any stage of their growth, available on flexible terms.

Lounge and communal areas in the building are perfect to grab five minutes peace away from your computer or to collaborate and brainstorm with colleagues away from your desks.

AMENITIES

Roof Terrace

Breakout Space

Showers

Bike Storage

Meeting Rooms

Phone Booths





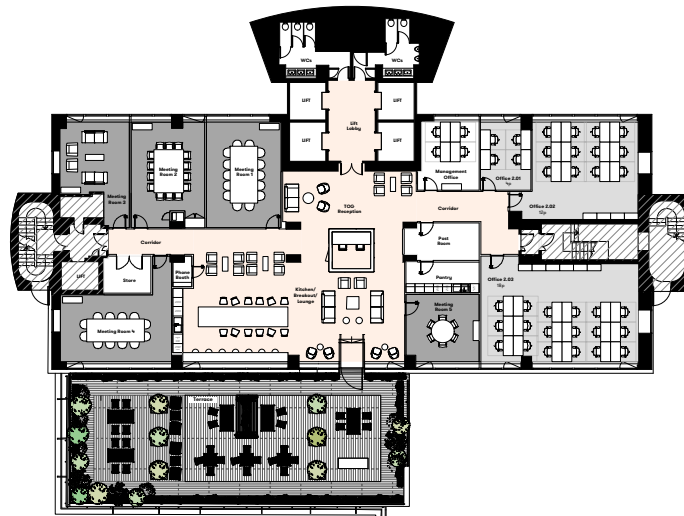
GENERAL NOTES

Size and dimensions to any elements are indicative only. All dimensions to be checked on site prior to commencement of any works.

DO NOT SCALE FROM THIS DRAWING.

FLOOR DATA

Office No. sq ft	1373
No. of Desks	26



F	FFSE Update	13.01.2020
E	Terrace updated	04.07.2019
D	Terrace updated	27.06.2019
C	Office Capacities amended	05.03.2019
B	Party Discontinued	18.02.2019
A	Updated to Architect's Issue 22.01.19	12.02.2019
	REVISION	DATE

Second Floor Sales Plan

SCALE	1:200 @ A3	REVISION	F
DWG NO.	SP_02	DRAWN BY	CAE
DATE	February 2019	TITLES	For Information

Orion House



TERMS

Flexible by arrangement

SUMMARY

Available Size	50 sq ft to 5,100 sq ft
Price	£790 per desk per month
Business Rates	Included in desk rate
VAT	Elected

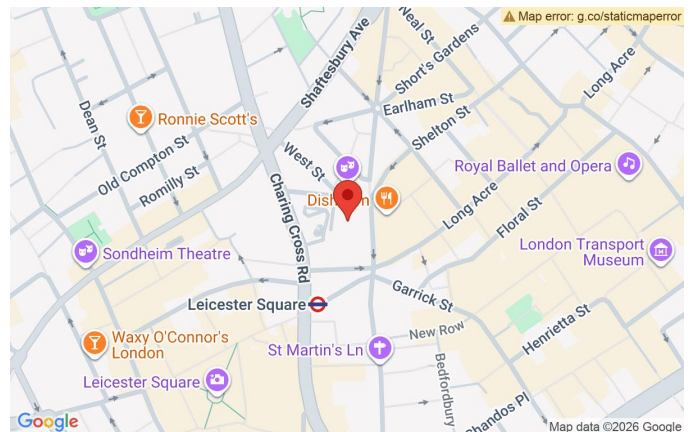
VIEWING & FURTHER INFORMATION

Viewing strictly by prior appointment with the sole agent:

CATHERINE ALEXANDER

catherine@bureauoffice.co.uk

+44 (0)7811 111600



LOCATION

Orion House is located on the corner of Upper St Martin's Lane and West Street which is a short stroll from Covent Garden and Leicester Square underground stations. The building is surrounded by bars and restaurants and is a few moments from the famous Seven Dials with its indoor market serving street food and drinks. Being in theatreland, there are some of the biggest West End shows available on your doorstep.

Misrepresentation Act: Bureau Office Limited for themselves and for the vendors or lessors of this property whose agents they are give notice that: (i) the particulars are set out as a general outline only for the guidance of intending purchasers or lessees and do not constitute part of, an offer or a contract, (ii) all descriptions, dimensions, references to condition and necessary permissions for use and occupation, and other details are given in good faith and are believed to be correct but any intending purchasers or tenants should not rely on them as statements of fact but satisfy themselves by inspection or otherwise as to the correctness, (iii) no person in the employment of Bureau Office Limited has the authority to make or give any representation or warranty whatsoever in relation to this property, (iv) all rents and prices are quoted exclusive of VAT.