

TINTAGEL HOUSE

OVERVIEW

With panoramic riverside views, Tintagel House – the former Met Police HQ – now boasts a wide variety of spaces and amenities.

The building has a garden that runs right up to the Thames, a top floor balcony offering expansive city views and stretches the full length of the building.

Tintagel House's foyer is a triple height space with real impact, blending a lounge, work space, a café, and incubator studios into one terrazzo-clad expanse.

Throughout the building you'll find focus booths and breakout spaces with OPO guided meditation for quiet moments.

AMENITIES

Bar

Lounge

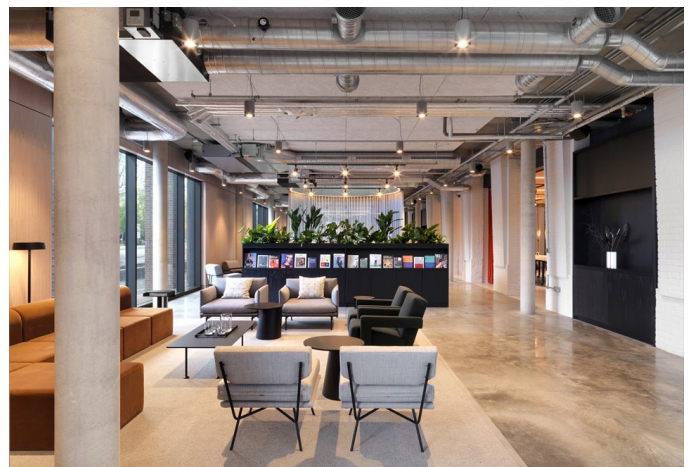
Bike Storage

Showers

Focus Booths

Roof Terrace

Gym

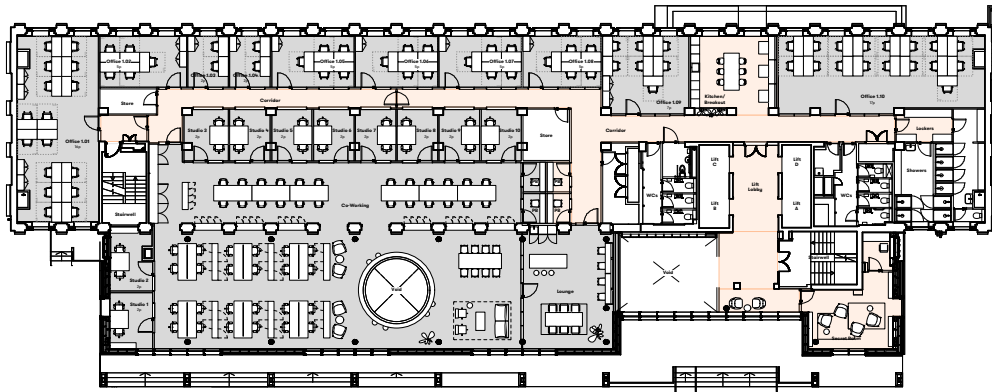




GENERAL NOTES

Size and dimensions to any elements are indicative only. All dimensions to be checked on site prior to commencement of any works.

DO NOT SCALE FROM THIS DRAWING.



REVISION DATE

First Floor Sales Plan

SCALE 1:200 @ A3

DWG NO. TGLSP01 REVISION -

DATE November 2019 DRAWN BY CAE

TITLE For Information

Tintagel House



TERMS

Flexible by arrangement

SUMMARY

Available Size 50 sq ft to 5,100 sq ft

Price £650 per desk per month

Business Rates Included in desk rate

VAT Elected

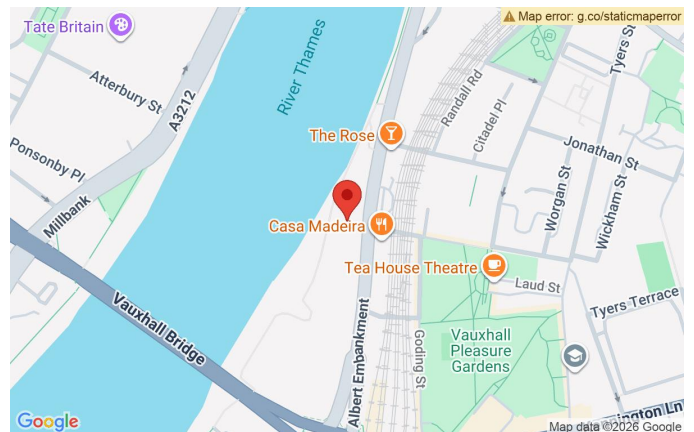
VIEWING & FURTHER INFORMATION

Viewing strictly by prior appointment with the sole agent:

CATHERINE ALEXANDER

catherine@bureauoffice.co.uk

+44 (0)7811 111600



LOCATION

Tintagel House is on the bank of the river, a five minute walk from Vauxhall station (National Rail and Victoria underground line). The Northern Line will soon be operating from the Nine Elms station which is a short walk from the building, improving the already good transport links.

Vauxhall has become a more popular area for business to base themselves in recent times. Large occupiers such as the US embassy have moved nearby along with Apple who have taken space in Battersea Power Station which is a 20 minute walk along the river.

Misrepresentation Act: Bureau Office Limited for themselves and for the vendors or lessors of this property whose agents they are give notice that: (i) the particulars are set out as a general outline only for the guidance of intending purchasers or lessees and do not constitute part of, an offer or a contract, (ii) all descriptions, dimensions, references to condition and necessary permissions for use and occupation, and other details are given in good faith and are believed to be correct but any intending purchasers or tenants should not rely on them as statements of fact but satisfy themselves by inspection or otherwise as to the correctness, (iii) no person in the employment of Bureau Office Limited has the authority to make or give any representation or warranty whatsoever in relation to this property, (iv) all rents and prices are quoted exclusive of VAT.