



## THE BLOOMSBURY BUILDING

### OVERVIEW

---

Inspired by British writers and literary lounges, The Bloomsbury Building features an old school games room with a piano and library.

---

There are lots of spaces to meet, collaborate and create within the building - including the co-working study, breakout spaces, phone and focus booths as well as large kitchen areas.

---

If you are looking for somewhere memorable to meet your clients, there is a games room complete with a house piano.

---

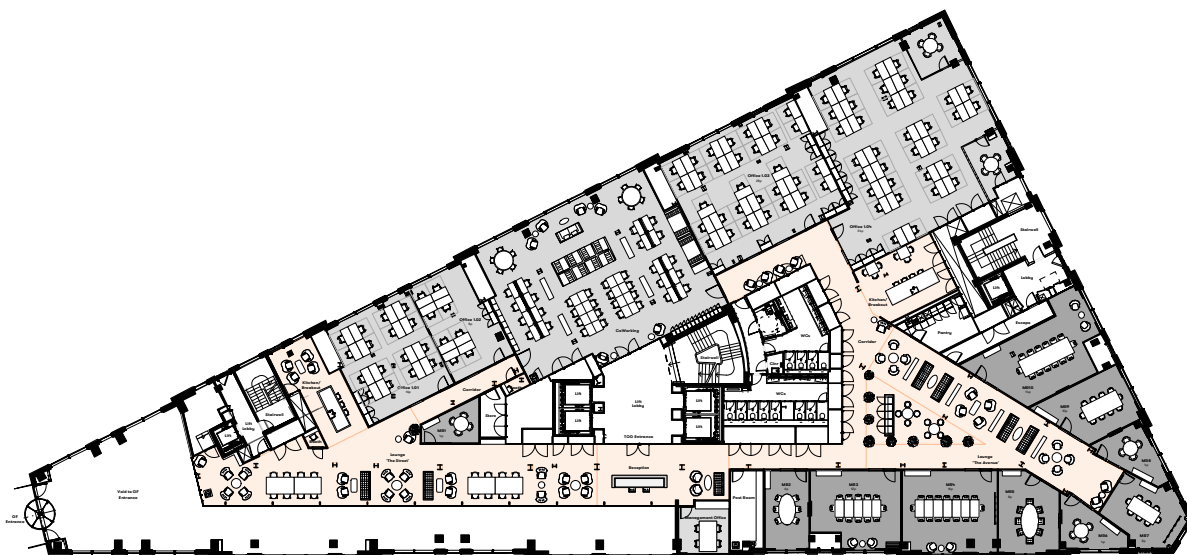
A variety of different sized offices are available within [the building which can be secured on flexible terms.](https://bureauoffice.d2iserver.com/Admin/AddEditProperty.aspx?RadUrid=258bfa4c-7645-49e6-a17e-f7b8a27ef1f0# "Bullet List")

---

### AMENITIES



Library
Recharge Room
Bike Storage
Showers
Phone Booths
Café
Lounge



## The Bloomsbury Building

### First Floor Sales Plan

SCALE	1:250 @ A3	REVISION	/
DWG No.	10BW_SP01	DRAWN BY	CAE
DATE	October 2019		
STATUS	For Information		

### REVISION

### DATE

FLOOR DATA	
Office No. (sqft)	4766
Number of desks	86

### GENERAL NOTES

Size and dimensions to any elements are indicative only. All dimensions to be checked on site prior to commencement of any works. DO NOT SCALE FROM THIS DRAWING.

## TERMS

Flexible by arrangement

## SUMMARY

Available Size	50 sq ft to 5,100 sq ft
Price	£800 per desk per month
Business Rates	Included in desk rate
VAT	Elected

## VIEWING & FURTHER INFORMATION

Viewing strictly by prior appointment with the sole agent:



## LOCATION

Publishing is a key part of the surrounding area's history and heritage, however the building itself was built in 1947 as an Army Recruitment Centre. It occupies a prominent position on Bloomsbury way and is an equidistant walk between Holborn and Tottenham Court Road underground stations.

Misrepresentation Act: Bureau Office Limited for themselves and for the vendors or lessors of this property whose agents they are give notice that: (i) the particulars are set out as a general outline only for the guidance of intending purchasers or lessees and do not constitute part of, an offer or a contract, (ii) all descriptions, dimensions, references to condition and necessary permissions for use and occupation, and other details are given in good faith and are believed to be correct but any intending purchasers or tenants should not rely on them as statements of fact but satisfy themselves by inspection or otherwise as to the correctness, (iii) no person in the employment of Bureau Office Limited has the authority to make or give any representation or warranty whatsoever in relation to this property, (iv) all rents and prices are quoted exclusive of VAT.