



2 ANGEL SQUARE

OVERVIEW

Bold forms and bright colours inspired by the Memphis Movement enliven this 1980s Postmodern building on thriving Upper Street.

Pocket lounges on each floor allow tenants to come together socially, whether that's an informal meeting over a coffee or exchanging ideas at lunch.

All on-site waste is recycled and energy consumption is monitored for optimisation, while high level of reuse runs through the interiors.

This work space is available on flexible terms in a variety of different sizes which will suit every type of company.

AMENITIES

Lounge Areas

Showers

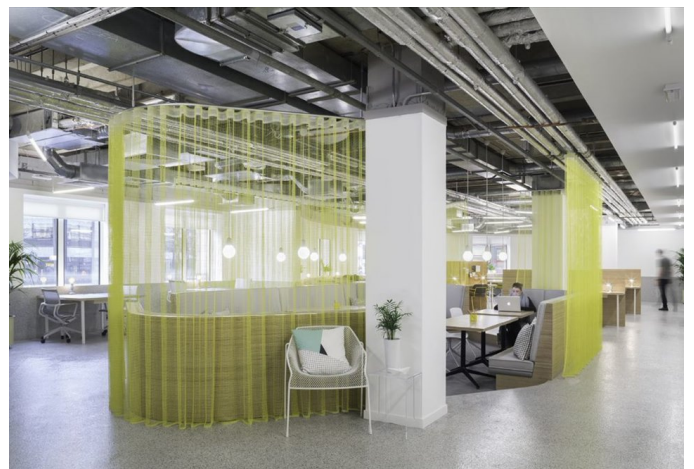
Bike Storage

Lockers

Phone Booths

Kitchens

Breakout Space





GENERAL NOTES

Size and dimensions for any elements are indicative only. All dimensions to be checked on site prior to commencement of any works.

DO NOT SCALE FROM THIS DRAWING.



REVISION DATE

First Floor Sales Plan

SCALE 1:200 @ A3

DWG NO: AGL_SMD1 REVISION -

DATE July 2020 DRAWN BY CAE

TITLE For Information

Angel Square



TERMS

Flexible by arrangement

SUMMARY

Available Size 50 sq ft to 5,100 sq ft

Price £550 per desk per month

Business Rates Included in desk rate

VAT Elected

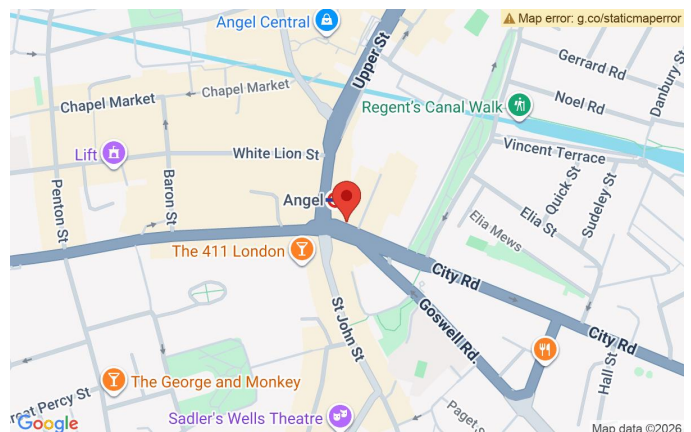
VIEWING & FURTHER INFORMATION

Viewing strictly by prior appointment with the sole agent:

CATHERINE ALEXANDER

catherine@bureauoffice.co.uk

+44 (0)7811 111600



LOCATION

2 Angel Square is a moments walk from Angel underground station which is served by the Northern Line. Also within walking distance is King Cross St Pancras - one of London's best connected stations.

Angel Square is located on Upper Street which is well know for its excellent selection of restaurants and bars, a perfect location for a post work get together. There are also may cafes and coffee shops within walking distance to suit an off-site meeting.

Misrepresentation Act: Bureau Office Limited for themselves and for the vendors or lessors of this property whose agents they are give notice that: (i) the particulars are set out as a general outline only for the guidance of intending purchasers or lessees and do not constitute part of, an offer or a contract, (ii) all descriptions, dimensions, references to condition and necessary permissions for use and occupation, and other details are given in good faith and are believed to be correct but any intending purchasers or tenants should not rely on them as statements of fact but satisfy themselves by inspection or otherwise as to the correctness, (iii) no person in the employment of Bureau Office Limited has the authority to make or give any representation or warranty whatsoever in relation to this property, (iv) all rents and prices are quoted exclusive of VAT.