



## 93 GLOUCESTER PLACE

### OVERVIEW

---

Carefully modernised grade II-listed Georgian townhouse retaining period features.

---

Bespoke office accommodation across across six floors, along with meeting rooms which range in size.

---

Compact suites suitable for teams of two to twenty people with high ceilings and excellent natural light.

---

Offices are available on flexible terms which allow businesses expand at any stage of their term.

---

### AMENITIES

---

Meeting Rooms

---

Lounge

---

Shower Facilities

---

Bike Storage

---

Reception

---

Fully Furnished

---

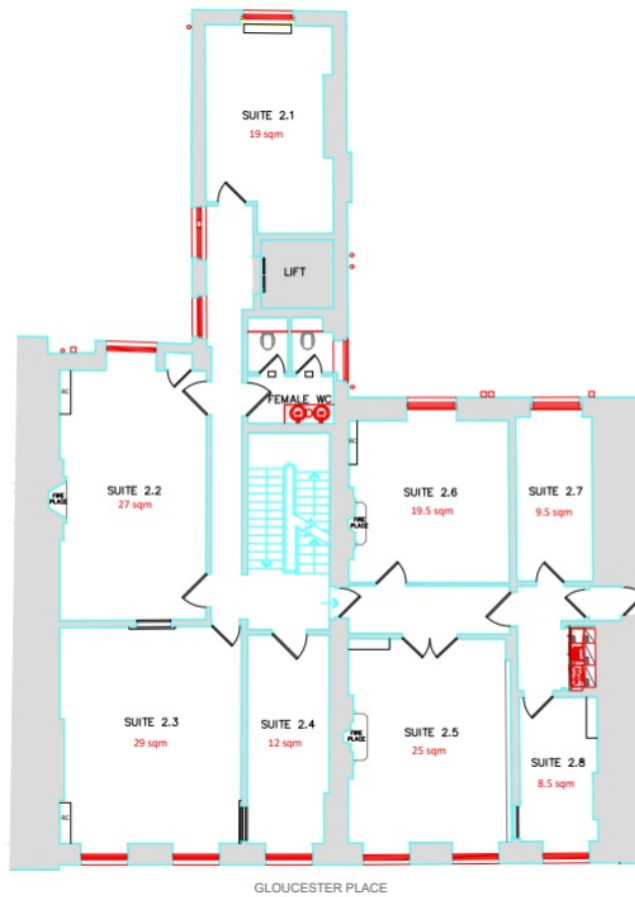
Kitchens

---

Staffed Reception

---





## TERMS

Flexible by arrangement

## SUMMARY

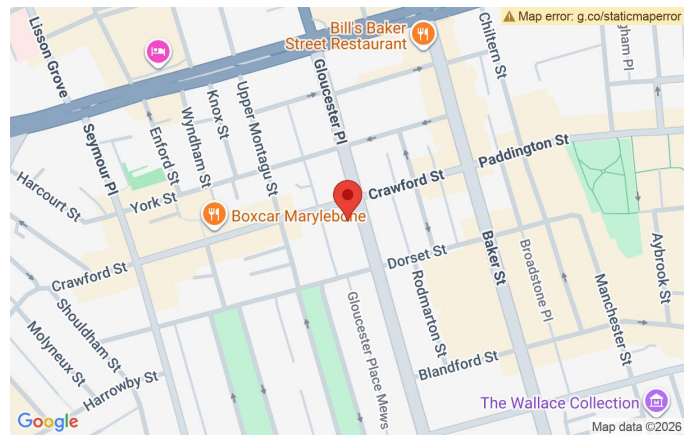
Available Size	100 sq ft to 10,000 sq ft
Price	£650 per desk per month
Business Rates	Included in desk rate
VAT	Elected

## VIEWING & FURTHER INFORMATION

To find out more and arrange a viewing, please contact the letting agent:

### CATHERINE ALEXANDER

catherine@bureauoffice.co.uk  
+44 (0)7811 111600



## LOCATION

93 Gloucester Place is in the heart of the Portman Estate and is located about half a mile from Bond Street and Regent's Park and a slightly shorter distance to Marylebone Village.

The building is a five minute stroll north to both Baker St tube and Marylebone station and an eight minute walk south to the Central line at Marble Arch. Bond Street and Edgware Road tube stations meanwhile are a 12 minute walk away. Further afield, Paddington station is less than a mile from the building while Kings Cross St Pancras and Liverpool Street are a 14 minute and 23 minute journey using the tube.

Misrepresentation Act: Bureau Office Limited for themselves and for the vendors or lessors of this property whose agents they are give notice that: (i) the particulars are set out as a general outline only for the guidance of intending purchasers or lessees and do not constitute part of, an offer or a contract, (ii) all descriptions, dimensions, references to condition and necessary permissions for use and occupation, and other details are given in good faith and are believed to be correct but any intending purchasers or tenants should not rely on them as statements of fact but satisfy themselves by inspection or otherwise as to the correctness, (iii) no person in the employment of Bureau Office Limited has the authority to make or give any representation or warranty whatsoever in relation to this property, (iv) all rents and prices are quoted exclusive of VAT.