

## 7 MANCHESTER SQUARE

### OVERVIEW

---

7 Manchester Square is stunning refurbished building in prime Marylebone with period features.

---

The building benefits from direct access from the square along with good natural light and a range of different office suites.

---

Available on an all-inclusive flexible lease that includes business rates, service charge, utilities and cleaning.

---

The building has pre-installed high speed fibre broadband, negating the need for costly and time consuming wayleave agreements.

---

### AMENITIES

---

Flexible Terms

---

Meeting Room

---

Recently Refurbished

---

Prime Location

---

High Speed Broadband

---

Inclusive Utilities

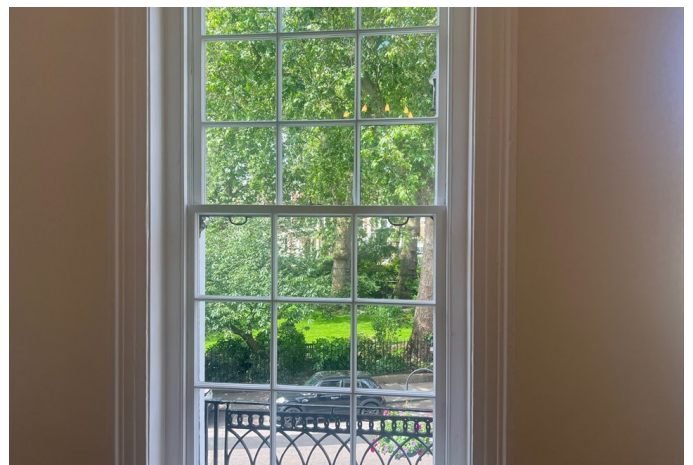
---

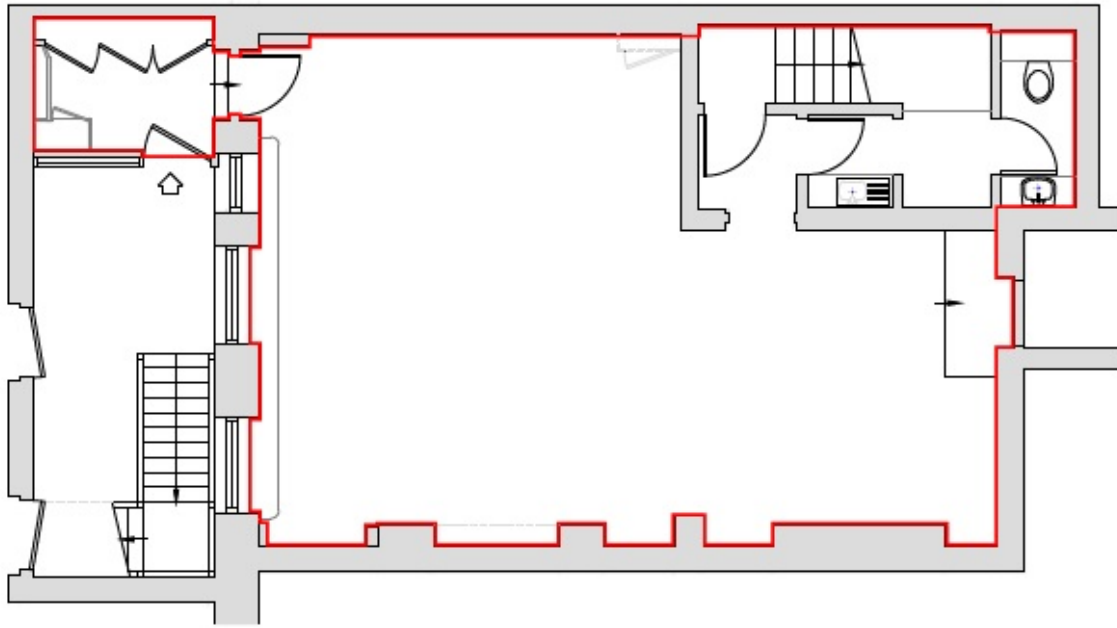
Fully Furnished

---

Cleaning

---





## TERMS

Flexible by arrangement

## SUMMARY

Available Size	99 sq ft to 2,150 sq ft
Price	From £1,137 pcm
Business Rates	Included in desk rate
VAT	Not elected

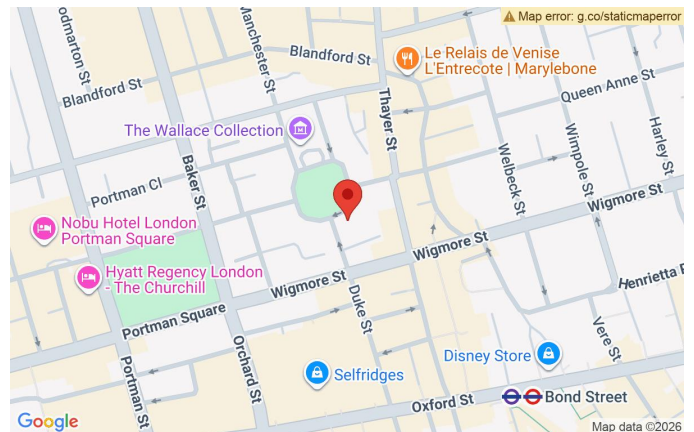
## VIEWING & FURTHER INFORMATION

Viewing strictly by prior appointment with the sole agent:

### CATHERINE ALEXANDER

catherine@bureauoffice.co.uk

+44 (0)7811 111600



## LOCATION

7 Manchester Square is situated in the south eastern quarter of this elegant garden square in the heart of London's West End.

The location is unrivalled with Marylebone High Street to the North, Bond Street Station (Central, Jubilee and Elizabeth lines) to the South, Oxford Circus (Bakerloo, Central and Victoria lines) to the East and Selfridges to the West. Mainline Rail services are provided at Marylebone, Euston, Kings Cross and Paddington. Numerous bus routes run locally and there are several car parks within close proximity.

Misrepresentation Act: Bureau Office Limited for themselves and for the vendors or lessors of this property whose agents they are give notice that: (i) the particulars are set out as a general outline only for the guidance of intending purchasers or lessees and do not constitute part of, an offer or a contract, (ii) all descriptions, dimensions, references to condition and necessary permissions for use and occupation, and other details are given in good faith and are believed to be correct but any intending purchasers or tenants should not rely on them as statements of fact but satisfy themselves by inspection or otherwise as to the correctness, (iii) no person in the employment of Bureau Office Limited has the authority to make or give any representation or warranty whatsoever in relation to this property, (iv) all rents and prices are quoted exclusive of VAT.