



20 EASTCASTLE STREET

OVERVIEW

20 Eastcastle Street offers serviced office space to let in Fitzrovia on flexible terms.

The offices are fully furnished and have pre-installed high speed broadband, allowing occupiers the ability to move in at short notice.

Communal meeting rooms are available to book which are equipped with the latest audio visual technology.

The space is available by way of licence agreement which gives tenants the reassurance that they can expand at any stage of their term.

AMENITIES

All Inclusive & Flexible Contracts

In-House Maintenance & IT Support

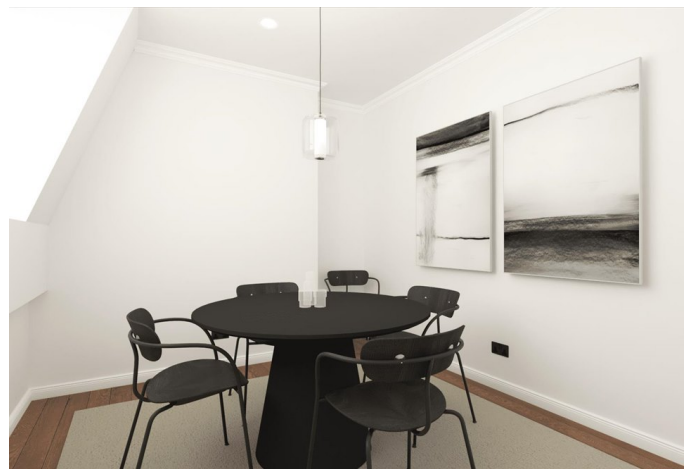
Daily Cleaning

Kitchens

High Speed Broadband

Fully Furnished

Air Conditioning



TERMS

Flexible by arrangement

SUMMARY

Available Size 200 sq ft to 500 sq ft

Price £780 per desk per month

Business Rates Included in desk rate

VAT Elected

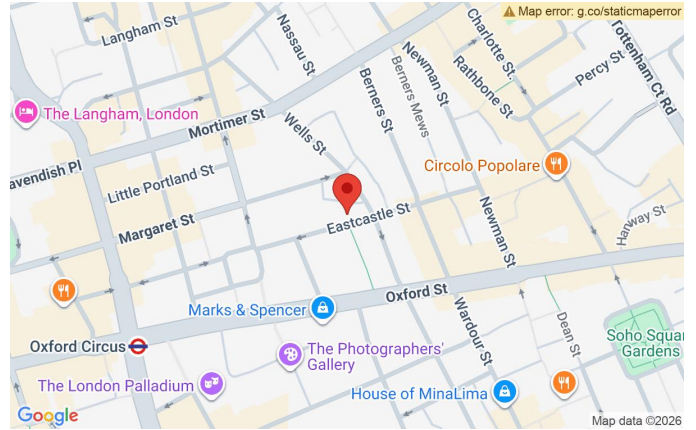
VIEWING & FURTHER INFORMATION

Viewing strictly by prior appointment with the sole agent:

CATHERINE ALEXANDER

catherine@bureauoffice.co.uk

+44 (0)7811 111600



LOCATION

20 Eastcastle Street is located on the north side of the road between the junctions of Wells Street and Great Titchfield Street. There are a great deal of restaurants, cafes and bars in the area for post work entertainment.

The building has excellent connections being situated between Oxford Circus (Bakerloo, Central and Victoria lines) and Tottenham Court Road (Central, Northern and Elizabeth lines) stations.

Misrepresentation Act: Bureau Office Limited for themselves and for the vendors or lessors of this property whose agents they are give notice that: (i) the particulars are set out as a general outline only for the guidance of intending purchasers or lessees and do not constitute part of, an offer or a contract, (ii) all descriptions, dimensions, references to condition and necessary permissions for use and occupation, and other details are given in good faith and are believed to be correct but any intending purchasers or tenants should not rely on them as statements of fact but satisfy themselves by inspection or otherwise as to the correctness, (iii) no person in the employment of Bureau Office Limited has the authority to make or give any representation or warranty whatsoever in relation to this property, (iv) all rents and prices are quoted exclusive of VAT.