



94 - 96 WIGMORE STREET

OVERVIEW

Set in a prime Marylebone location, 94-96 Wigmore Street offers 700-11,500 sq ft of high-quality, fully fitted and furnished office space. The building offers end of trip facilities, a passenger lift, LED lighting and VRV air conditioning.

AMENITIES

Fully fitted and furnished floors

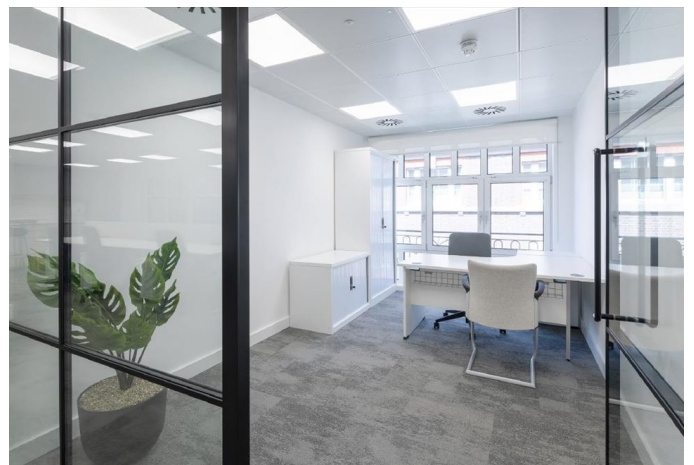
Cycle Storage

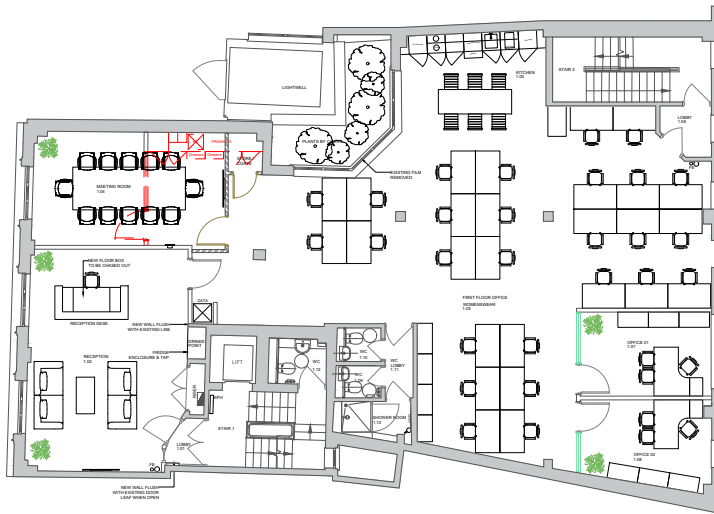
VRV Air Conditioning

Passenger Lift

Prime Marylebone Location

LED Light





Notes:
 THIS DRAWING IS THE PROPERTY OF WORKPLACE CREATIONS LTD. IT MUST NOT BE COPIED, REPRODUCED, OR OTHERWISE USED WITHOUT THE WRITTEN PERMISSION OF WORKPLACE CREATIONS LTD.
 © COPYRIGHT WORKPLACE CREATIONS LTD 2022
 DO NOT SCALE FROM THIS DRAWING. ALL DIMENSIONS MUST BE CHECKED BEFORE THE COMMENCEMENT OF ANY WORK.

General Notes:

Workplace Creations
 Avery Real Estate
 First Floor
 24-26 Wigmore Street
 London
 W1U 2JF

FOR INFORMATION ONLY

30/07/24 1:30 (BA1)

Proposed
 Sketch Layout 01

NT xx /

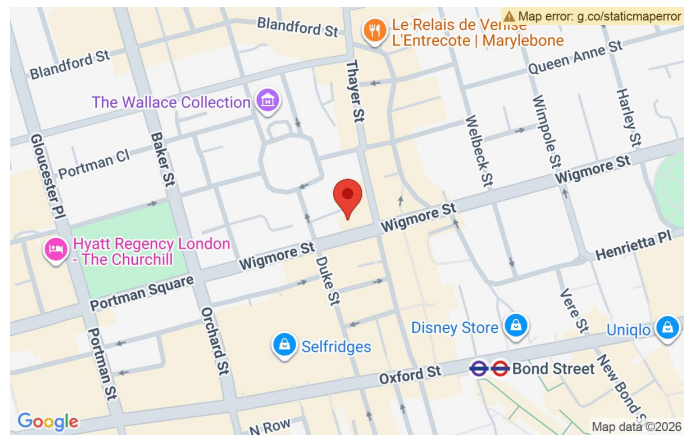
40288 01-SK01

TERMS

Flexible by arrangement, £185 per sq ft all Inclusive

SUMMARY

Available Size	700 sq ft to 11,500 sq ft
Floor:6th	677 sq ft
Floor:5th	794 sq ft
Floor:4th	791 sq ft
Floor:3rd	792 sq ft
Floor:2nd	788 sq ft
Floor:2nd - Duke Mews Side	907 sq ft
Floor:1st	2,486 sq ft



LOCATION

Located in the heart of the chic Marylebone neighbourhood, renowned for its independent boutiques, high-quality restaurants, and trendy hotels, this area also offers excellent transport links with Bond Street and Oxford Circus just a few minutes' walk away.

VIEWING & FURTHER INFORMATION

Viewing strictly by prior appointment with the sole agent:

CATHERINE ALEXANDER

catherine@bureauoffice.co.uk

+44 (0)7811 11600

Misrepresentation Act: Bureau Office Limited for themselves and for the vendors or lessors of this property whose agents they are give notice that: (i) the particulars are set out as a general outline only for the guidance of intending purchasers or lessees and do not constitute part of, an offer or a contract, (ii) all descriptions, dimensions, references to condition and necessary permissions for use and occupation, and other details are given in good faith and are believed to be correct but any intending purchasers or tenants should not rely on them as statements of fact but satisfy themselves by inspection or otherwise as to the correctness, (iii) no person in the employment of Bureau Office Limited has the authority to make or give any representation or warranty whatsoever in relation to this property, (iv) all rents and prices are quoted exclusive of VAT.