



7 DUKES MEWS

OVERVIEW

Open plan office accommodation with a feature kitchen, demised shower and bathrooms. Located just behind 94-96 Wigmore Street, the property benefits from access to cycle storage and is situated on a discreet mews street.

AMENITIES

Feature Kitchen

Wooden Floors

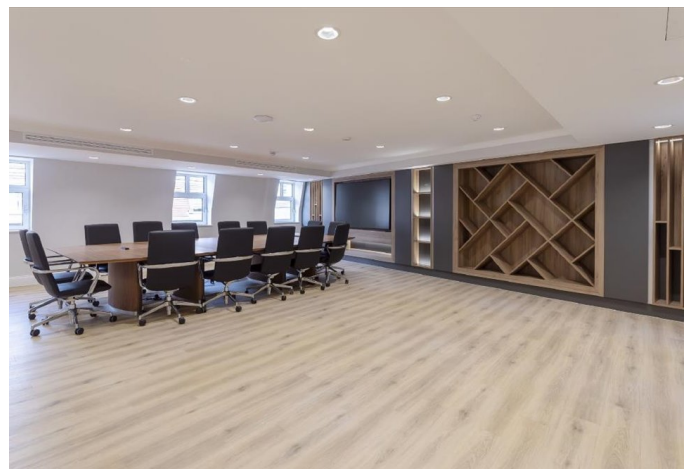
LED Lighting

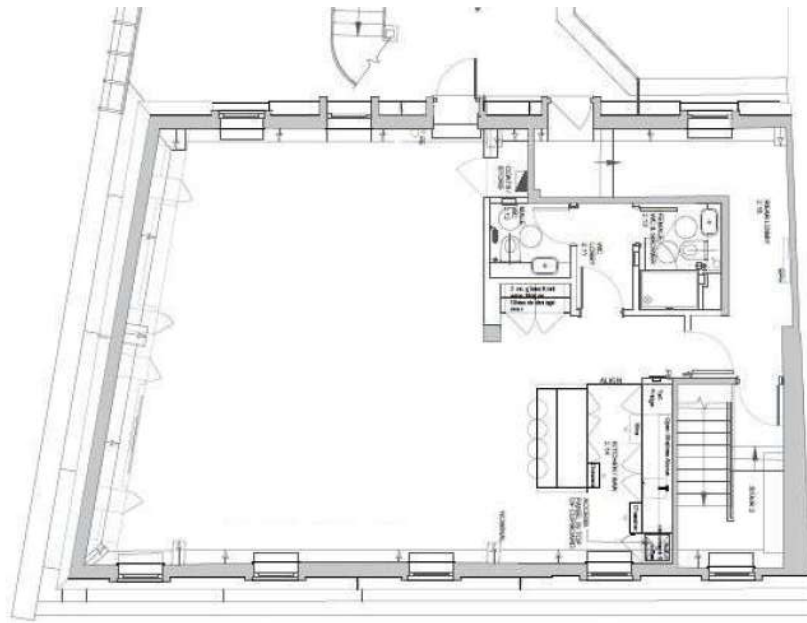
Demised WC & Shower

VRV Air Conditioning

Cycle Storage

Prime Marylebone Location





TERMS

SUMMARY

Available Size	907 sq ft
Floor:Mews	907 sq ft
Rent	£92.50 per sq ft
Business Rates	RP: £30.70 sq ft
Service Charge	£14 sq ft

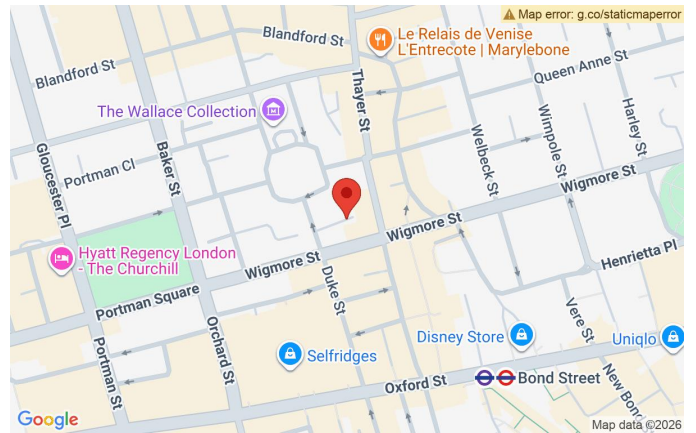
VIEWING & FURTHER INFORMATION

Viewing strictly by prior appointment with the sole agent:

CATHERINE ALEXANDER

catherine@bureauoffice.co.uk

+44 (0)7811 111600



LOCATION

The Property is located in Duke's Mews, a quiet mews off Duke Street, in the heart of Marylebone. Baker Street (Bakerloo, Jubilee, Metropolitan, Circle, and Hammersmith & City lines) and Bond Street (Central, Jubilee, and Elizabeth lines) stations are both within walking distance. Marylebone High Street is nearby, offering a range of shops, cafes, and restaurants.

Misrepresentation Act: Bureau Office Limited for themselves and for the vendors or lessors of this property whose agents they are give notice that: (i) the particulars are set out as a general outline only for the guidance of intending purchasers or lessees and do not constitute part of, an offer or a contract, (ii) all descriptions, dimensions, references to condition and necessary permissions for use and occupation, and other details are given in good faith and are believed to be correct but any intending purchasers or tenants should not rely on them as statements of fact but satisfy themselves by inspection or otherwise as to the correctness, (iii) no person in the employment of Bureau Office Limited has the authority to make or give any representation or warranty whatsoever in relation to this property, (iv) all rents and prices are quoted exclusive of VAT.