



## MERIDIEN HOUSE

### OVERVIEW

---

Meridian House boasts an elegantly styled reception area, beautifully designed lounge, and sociable breakout space.

---

Boardrooms, meeting rooms and phone booths fill the centre creating a space that enhances collaboration and team communication.

---

A variety of different sized offices are available on flexible licence agreements allowing tenants to expand at any point during their term.

---

Offices are fully furnished, have pre-installed high speed broadband and can be decorated to an occupiers taste before occupation.

---

### AMENITIES

---

24 Hour Access

---

Bike Storage

---

Showers

---

Breakout Space

---

Kitchens

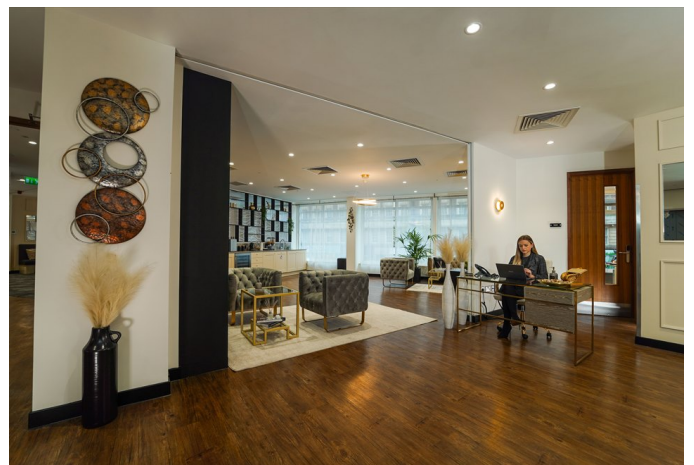
---

Chat Rooms

---

Meeting Rooms

---





## TERMS

Flexible by arrangement

## SUMMARY

Available Size	50 sq ft to 10,000 sq ft
Price	£450 per desk per month
Business Rates	Included in desk rate
VAT	Elected

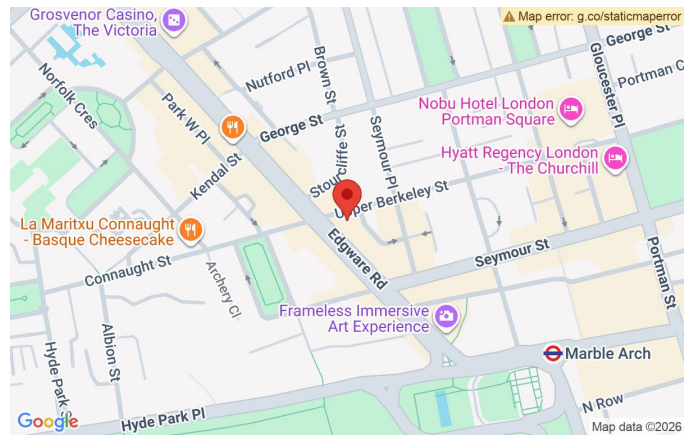
## VIEWING & FURTHER INFORMATION

Viewing strictly by prior appointment with the sole agent:

**CATHERINE ALEXANDER**

catherine@bureauoffice.co.uk

+44 (0)7811 111600



## LOCATION

Meridien House is located within the heart of the West End, ideally located between Mayfair, Paddington, and Marylebone near the iconic Marble Arch. In this up-and-coming area in the West End, your business will have the pleasure of enjoying the social spots around Meridien House for team nights out and employee lunch and dinners.

Access to public transport is provided via Marble Arch, Bond Street and Baker Street tube stations (Central, Jubilee, Hammersmith & City and Metropolitan lines). Marylebone station is also easily accessible with National Rail services.

Misrepresentation Act: Bureau Office Limited for themselves and for the vendors or lessors of this property whose agents they are give notice that: (i) the particulars are set out as a general outline only for the guidance of intending purchasers or lessees and do not constitute part of, an offer or a contract, (ii) all descriptions, dimensions, references to condition and necessary permissions for use and occupation, and other details are given in good faith and are believed to be correct but any intending purchasers or tenants should not rely on them as statements of fact but satisfy themselves by inspection or otherwise as to the correctness, (iii) no person in the employment of Bureau Office Limited has the authority to make or give any representation or warranty whatsoever in relation to this property, (iv) all rents and prices are quoted exclusive of VAT.